



Fri 13 Sep –  
Sat 14 Sep 2019

**To pre-book, visit:**

[www.opencambridge.cam.ac.uk](http://www.opencambridge.cam.ac.uk)

or call: 01223 766766

**Bookings open:**

Mon 19 Aug 2019

**Lines open:**

11AM – 3PM

Mon – Fri



Our thanks go to the Cambridge Blue and Green Badge Guides – all members of the Society of Cambridge Tourist Guides – who are leading themed walking tours for Open Cambridge 2019 for free.

Those who book walking tours are expected to keep up at a moderate pace for the duration of the tour. We regret that dogs, pushchairs, scooters and bicycles are not permitted.

**Tips for attending Open Cambridge**

- There is no need to pre-book events unless specifically stated. All events are free of charge unless otherwise stated.
- Children under the age of 16 must be accompanied by an adult at all times.
- You may be refused entry if you arrive after an event has started even if you have booked.

Your attendance at the festival signifies your agreement to comply with the Guidance for attending Open Cambridge:

[www.opencambridge.cam.ac.uk/attending](http://www.opencambridge.cam.ac.uk/attending)

The University of Cambridge and our sponsors and partners are proud to present the Open Cambridge Weekend.



# Welcome to Open Cambridge 2019

# Cambridge opens its doors for a special weekend









Welcome to Open Cambridge, a celebration of Cambridge's history, architecture, art and gardens.

Throughout Friday 13 and Saturday 14 September join us for walks, talks, tours and exhibitions that will highlight aspects of the City's history – natural and cultural, civic and religious, scholarly, recreational and industrial.

Open Eddington will showcase the North West Cambridge development and its buildings in this new neighbourhood.

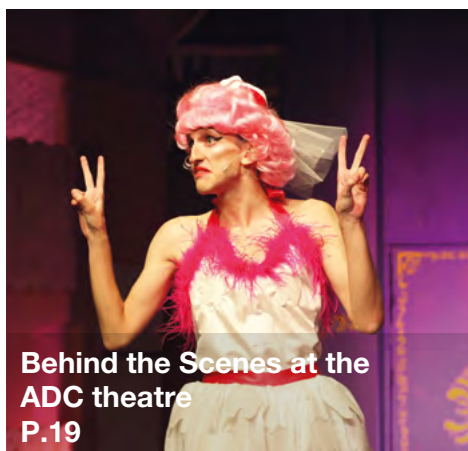
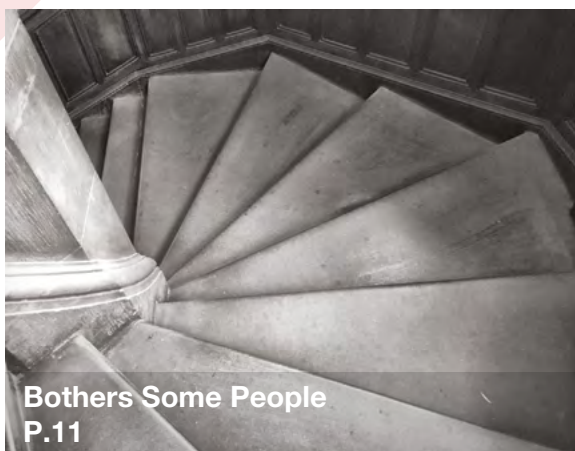
We hope that you will enjoy exploring this wonderful City.

## KEY

	Pre book
<b>14+</b>	Minimum age
	Exhibition
	Talk
	Tour
	Drop in
	Hands on

# Please tell us what you think

[www.opencambridge.cam.ac.uk/feedback](http://www.opencambridge.cam.ac.uk/feedback)



# Open Cambridge

**Feature Image**

A detail from the purported portrait of  
Christopher Marlowe

© The Master and Fellows of Corpus  
Christi College, Cambridge



## TOURS OF AMEY WASTE MANAGEMENT PARK

Ever wondered what happens to your waste? Find out during a revealing tour of Cambridgeshire's waste management park.

**9AM - 10AM**

**10.30AM - 11.30AM**

**NOON - 1PM**

**1.30PM - 2.30PM**

**3PM - 4PM**

→ **FRI 13 SEPT**

Education Centre, Amey Waste Management Park,  
Ely Road, Waterbeach,  
CB25 9PQ



## TREASURES OF QUEENS' COLLEGE OLD LIBRARY

The Old Library dates from 1448 and holds 30,000 volumes, many annotated by generations of Queens' scholars. Visit the library and see this invaluable record of intellectual activity from early modern times until the 19th century.

**10AM - 10.30AM**

**10.30AM - 11AM**

**11.30AM - NOON**

**NOON - 12.30PM**

**12.30PM - 1PM**

**2PM - 2.30PM**

**2.30PM - 3PM**

→ **FRI 13 SEPT**

→ **SAT 14 SEPT**

Old Library, Queens' College,  
Silver Street, CB3 9ET



## MARSHALL LIBRARY OF ECONOMICS OPEN DAY

A rare chance to see this library space designed by Sir Hugh Casson and hidden within the Austin Robinson Building on the Sidgwick Site. Join us for tours and a chance to view some of our rare books, many of which were owned by Alfred Marshall, the founding father of Economics.

**10AM - 11AM**

**11AM - NOON**

**NOON - 1PM**

**2PM - 3PM**

**3PM - 4PM**

→ **FRI 13 SEPT**

Austin Robinson Building,  
Marshall Library of Economics,  
Sidgwick Avenue, CB3 9DB



## THE ROCK STORE TOUR

A peek behind the scenes of the Sedgwick Museum's new Geological Collections Store, designed to house more than half a million rocks, minerals and fossils, in state-of-the-art conditions.

**10AM - 10.45AM**

**11.15AM - NOON**

**12.30PM - 1.15PM**

→ **FRI 13 SEPT**

Brighton Building, Sedgwick Museum Conservation Unit,  
Madingley Road,  
Madingley Rise, CB3 0EZ



**THE SAINT AND THE SEAFARERS: THE VIKINGS IN CAMBRIDGE**

In the historic old town a Viking church challenges our ideas about these legendary invaders. Discover more of their world with Cambridge Green Badge Guide, Julia Eisen.

**10AM - 11AM**  
→ **FRI 13 SEPT**  
**2PM - 3PM**  
→ **SAT 14 SEPT**

St Clement's Church,  
Bridge Street, CB2 1UF

 **14+** 

**ARTSCAPE: THE JUXTAPOSITION OF ART, ARCHITECTURE AND LANDSCAPE AT MURRAY EDWARDS COLLEGE**

Murray Edwards College is home to award-winning gardens, an internationally acclaimed art collection by women artists, and a bountiful archive and library. Take a tour around the College led by the librarian, art curator and head gardener and then join us for tea in the library.

**10AM - 11.30AM**  
**2PM - 3.30PM**  
→ **FRI 13 SEPT**

Rosemary Murray Library,  
Murray Edwards College, New Hall, CB3 0DF



**BOOKS BOOKS BOOKS! WHAT YOU DO WITH EIGHT MILLION OF THEM**

Join our librarians on this guided tour of the University Library to find out how we look after eight million books (and counting!). Go behind the scenes to the Victorian and Edwardian collections in the tower and into our closed rolling stacks housing our more modern mid-late 20th century books.

**10AM - 11.30AM**  
**2PM - 3.30PM**  
→ **FRI 13 SEPT**  
→ **SAT 14 SEPT**

Cambridge University Library,  
West Road, CB3 9DR

 **18+** 

**CAMBRIDGE'S COMMONS: THE ORIGINAL GREEN BELT**

Join us on a 90 minute cycle tour with Green Badge Guide, Gerald Smith, to explore Cambridge's commons through the ages. Why were they important, who made use of them and to what purpose?

**10AM - 11.30AM**  
→ **FRI 13 SEPT**  
→ **SAT 14 SEPT**

Meet outside the University Centre, Granta Place, Mill Lane, CB2 1RU

 **14+** 

## WALKING TOURS OF THE CAMBRIDGE BIOMEDICAL CAMPUS

The Cambridge Biomedical Campus is home to over 20,000 people working to ensure patients benefit from the campus' world-leading research. This tour will take you round the site and into some of the buildings where academia, industry, research and health collaborate.

**10AM - 11.30AM**

**2PM - 3.30PM**

→ **FRI 13 SEPT**

The Green and the Gardens,  
Royal Papworth Hospital NHS  
Foundation Trust, Papworth  
Road, Cambridge Biomedical  
Campus, CB2 0AY



## BISHOP SELWYN AS DRAUGHTSMAN: IMAGES OF NINETEENTH-CENTURY NEW ZEALAND AND MELANESIA

This exhibition focuses on Bishop George Augustus Selwyn's illustrations in his letters, journals and field notebook. These show detailed drawings of people, buildings, landscapes, and maps showing his journeys across New Zealand and Melanesia.

**10AM - 4PM**

→ **FRI 13 SEPT**

Library, Selwyn College,  
Grange Road, CB3 9DQ



## BULLS, PORCUPINES AND OTHER ANIMALS

An exploration of animals connected with Sidney Sussex College, ranging from Cambrian fossils discovered in the Burgess Shale to the College cats.

**10AM - 4PM**

→ **FRI 13 SEPT**

→ **SAT 14 SEPT**

Richard Powell Library, Sidney  
Sussex College, Sidney  
Street, CB2 3HU



## SMALL LIBRARY, BIG STATE: ALASKA COLLECTIONS IN THE SCOTT POLAR RESEARCH INSTITUTE LIBRARY AND ARCHIVES

This self-guided tour highlights items from Alaskan collections held in the library and archive. Items on display include books on wildlife and maps and archival materials on the exploration of Alaska.

**10AM - 4PM**

→ **FRI 13 SEPT**

Scott Polar Research Institute,  
Lensfield Road, CB2 1ER



## CAMBRIDGE MOSQUE OPEN DAY

Enjoy our many activities including a guided tour of the mosque, an exhibition of Islamic art and culture, a chance to see how Muslims pray, question and answer sessions, refreshments and much more.

**10AM - 5PM**

→ **FRI 13 SEPT**

→ **SAT 14 SEPT**

Abu Bakr Masjid,  
1A Mawson Road, CB1 2DZ



## TSZWAI SO: EMOTIONAL ARCHITECTURE - TRANSFORMING RESPONSES TO SPACE

An exhibition of the work of architect, Tszwai So, highlighting his responses, in his buildings and the spaces he creates, to the attachments of people to places.

**10AM - 5PM**

→ **FRI 13 SEPT**

→ **SAT 14 SEPT**

Combination Room, Wolfson  
College, Barton Road,  
CB3 9BB



**HORTICULTURE AT A MEMORIAL SITE**

Walk the hallowed grounds of Cambridge American Cemetery and Memorial. Discover how we keep the grass green and the headstones white and maintain this prestigious heritage site.

**10.30AM - 11.30AM**  
**2.30PM - 3.30PM**  
→ **FRI 13 SEPT**  
→ **SAT 14 SEPT**

Meet in Entrance courtyard, Cambridge American Cemetery and Memorial, Madingley Road, Coton, CB23 7PH



**WOLFSON COLLEGE GARDENS TOUR**

The gardens at Wolfson have been described as the most interesting and diverse in Cambridge. Join the head gardener for a tour around our garden 'rooms', which feature a fantastic range of mature trees, colourful perennial borders, topiary, roses and grasses.

**10.30AM - NOON**  
→ **FRI 13 SEPT**  
**2PM - 3.30PM**  
→ **SAT 14 SEPT**

Wolfson College, Barton Road, CB3 9BB



**MUSEUM OF CAMBRIDGE OPEN DAYS**

Visit our quirky and unusual building and fascinating objects in our collections, which represent 300 years of Cambridge and Cambridgeshire history.

**10.30AM - 5PM**  
→ **FRI 13 SEPT**  
→ **SAT 14 SEPT**

Museum of Cambridge, 2/3 Castle Street, CB3 0AQ



**DISCOVER THE DAVID ATTENBOROUGH BUILDING**

Explore the David Attenborough Building and its hidden contents. Home to the Cambridge Conservation Initiative, the building houses artworks that inspire the conservation community, including paintings and drawings by Jonathan Kingdon.

**11AM - 11.45AM**  
**1PM - 1.45PM**  
**4PM - 4.45PM**  
→ **FRI 13 SEPT**

David Attenborough Building, New Museums Site, CB2 3QZ



**HISTORY AND HERITAGE OF GREAT ST MARY'S**

Explore the remarkable history and heritage of Great St Mary's, the first home of the University from 1209, and the significant part the Church has played in the history of the University and City of Cambridge over some 800 years.

**11AM - 11.45AM**  
→ **FRI 13 SEPT**

University Church, Great St Mary's, Senate House Hill, CB2 3PQ



**HISTORIC CAMBRIDGE**

Cambridge is renowned for the beauty of its buildings and for its rich history, dating back to the Romans. Join Cambridge Blue and Green Badge tour Guides to discover some of the people, events and places that have made Cambridge the vibrant city and scientific powerhouse it is today.

**11AM - 12.30PM**  
**2.15PM - 3.45PM**  
→ **FRI 13 SEPT**  
→ **SAT 14 SEPT**

Central Cambridge location, venue will be emailed on booking





### WOMEN IN CAMBRIDGE

Led by Cambridge Green Badge Guides, this walking tour looks at the influence of women in Cambridge, from early College founders, through Queens and townswomen, to the 19th-century pioneers who founded the first women's Colleges, and their successors.

**11AM - 12.30PM**

→ **FRI 13 SEPT**

**11.45AM - 1.15PM**

→ **SAT 14 SEPT**

Central Cambridge location, venue will be emailed on booking



### THE COMPLETE CAMBRIDGE TOUR: PUNTING AND WALKING

Join us for a complete tour of Cambridge led by knowledgeable guides from Visit Cambridge and Scudamore's Punting Company, and find out more about the University and historic city.

**11AM - 1PM**

**1PM - 3PM**

**3PM - 5PM**

→ **FRI 13 SEPT**

Scudamore's Mill Lane punting station, Granta Place, Mill Lane, CB2 1RS



### BOTHERS SOME PEOPLE

Are you bothered by the idea of setting anything to happen on Friday the 13th? Browse an exhibition of books about other worries of this kind, from around the world and from times present and past.

**11AM - 4PM**

→ **FRI 13 SEPT**

Department of Archaeology,  
Downing Street, CB2 3DZ



### CAMBRIDGE FIRE STATION OPEN DAY

Meet our Cambridge firefighters and find out what life is like in a working fire station, what the crews get up to and the different jobs they attend.

**11AM - 4PM**

→ **FRI 13 SEPT**

→ **SAT 14 SEPT**

Cambridge Fire Station,  
Parkside Place Community  
Fire Station, Parkside,  
CB1 1JF



**THE ROUND CHURCH  
OPEN DAY**

Join us at Cambridge's second oldest building to discover the stunning 12th-century architecture of one of four round churches in England.

**11AM - 4.30PM**

→ **FRI 13 SEPT**

→ **SAT 14 SEPT**

The Round Church, Bridge Street, CB2 1UB



**CAMBRIDGE SPIES**

There is more to Cambridge spying than what the KGB called the 'Magnificent Five' who betrayed their country to the Soviet Union. Join Cambridge Green Badge Guides on a walking tour of the Colleges associated with Cambridge's contribution to the world of espionage.

**11.15AM - 12.45PM**

**2.30PM - 4PM**

→ **FRI 13 SEPT**

→ **SAT 14 SEPT**

Central Cambridge location, venue will be emailed on booking



**STORIES OF THE  
AMERICANS IN BRITAIN  
DURING WORLD WAR II**

Discover the stories of those young Americans who arrived here in World War II as part of the 'Friendly Invasion' and who are now commemorated at Cambridge American Cemetery and Memorial.

**11.30AM - 12.20PM**

**1.30PM - 2.20PM**

**3.30PM - 4.20PM**

→ **FRI 13 SEPT**

→ **SAT 14 SEPT**

Meet in Entrance courtyard, Cambridge American Cemetery & Memorial, Madingley Road, Coton, CB23 7PH



**HISTORY OF SPORT IN  
CAMBRIDGE: CRADLE OF  
A LEISURE REVOLUTION**

Cambridge is the birthplace of the laws of football and has made many other significant contributions to sport. Nigel Fenner discusses the role of the City as the cradle of a leisure revolution during the Victorian and Edwardian eras.

**NOON - 1PM**

→ **FRI 13 SEPT**

Fenner's Cricket Ground, Mortimer Road, CB1 2EL



**YOKO ONO: SKY PIECES**

A leading artist of the Fluxus movement and a pioneer of Conceptual Art, Yoko Ono was a major figure in the late 1950s and early 1960s New York underground avant-garde scene. She continues to create thought-provoking art and music which challenges the way we understand art and the world around us.

**NOON - 5PM**

→ **FRI 13 SEPT**

→ **SAT 14 SEPT**

The Heong Gallery, Downing College, Regent Street, CB2 1DQ





### **CAMBRIDGESHIRE COUNTY COUNCIL: ARCHAEOLOGY INSIDE A COLD WAR BUNKER**

This self-guided tour includes a visit to the bunker and a chance to view some of the archaeological material stored inside it. Find out about the nuclear bunker beneath the County Council's former office buildings.

**1PM - 2PM**

**2PM - 3PM**

**3PM - 4PM**

→ **FRI 13 SEPT**

→ **SAT 14 SEPT**

**NOON - 1PM**

→ **SAT 14 SEPT**

The Bunker, Cambridgeshire County Council, Shire Hall campus, Castle Court Building (to the rear of Octagon Building), CB3 0AP



### **LITERARY CAMBRIDGE**

From John Milton to Joanne Harris Cambridge has a rich literary history. Join Cambridge Green Badge Guide, Peter Hains, on a walking tour discussing novelists, poets and playwrights connected with the city, and hear extracts from their works.

**1PM - 3PM**

→ **FRI 13 SEPT**

**9AM - 11AM**

→ **SAT 14 SEPT**

Central Cambridge location, venue will be emailed on booking



### **DISCOVERY TALK: FISH INSIDE OUT**

Computerised tomography scans are widely used in medicine to see inside the body to diagnose and monitor illnesses. CT scans also have an important place in modern Zoology. Join Dr Kate Criswell as she explores fish anatomy using CT scans of some of the specimens in the museum's fish collection.

**1.15PM - 1.45PM**

→ **FRI 13 SEPT**

Museum of Zoology,  
Downing Street, CB2 3EJ



### **THE YOUNG CHARLES DARWIN IN CAMBRIDGE**

Contrary to the common image of Charles Darwin as an old man, he was young once! He said his three years in Cambridge were "the most joyful of my happy life." Join Cambridge Green Badge Guide, Murray Jacobs, on this walking tour to discover why he came, where he lived and what he did here.

**1.30PM - 3.30PM**

→ **FRI 13 SEPT**

Central Cambridge location, venue will be emailed on booking



### **REFORMATION, HERESY AND REVIVAL**

Cambridge is known as the cradle of the English Reformation and has long been a centre for radical theological debate. Join Cambridge Green Badge guide, Leigh Watson, on a tour of sites around the city that have been the scene of key events in the history of the English church.

**2PM - 3.30PM**

→ **FRI 13 SEPT**

**10AM - 11.30AM**

→ **SAT 14 SEPT**

Central Cambridge location, venue will be emailed on booking



**SELWYN COLLEGE  
GARDENS TOUR**

Join us for a guided tour of the Selwyn College gardens and see the Victorian border at the height of its display.

**2PM - 3PM**  
→ **FRI 13 SEPT**

Meet at Porters' Lodge,  
Selwyn College, Grange  
Road, CB3 9DQ



**TOUR OF ROBINSON  
COLLEGE GARDENS**

Discover the spectacular College grounds, a fusion of several original Edwardian gardens, each with their own distinctive character given focus by a new small lake.

**2PM - 3.30PM**  
**4.15PM - 5.45PM**  
→ **FRI 13 SEPT**  
→ **SAT 14 SEPT**

Porters' Lodge, Robinson  
College, Grange Road,  
CB3 9AN



**TUDOR CAMBRIDGE**

What did the Tudors ever do for us? Join Cambridge Green Badge guide, Gerald Smith, on a walking tour that explores the Tudor dynasty's lasting influence on the town and university.

**2PM - 3.30PM**  
→ **FRI 13 SEPT**  
→ **SAT 14 SEPT**

The Great Gate, St John's  
College, St John's Street,  
CB2 1TW



**TREASURES OF ST  
JOHN'S COLLEGE OLD  
LIBRARY**

The 17th-century library houses collections spanning over a thousand years. Discover its treasures, richly decorated medieval manuscripts, early printed books, pioneering photography and papers of key literary and scientific figures.

**2PM - 4PM**  
→ **FRI 13 SEPT**  
**1PM - 4PM**  
→ **SAT 14 SEPT**

The Old Library, St John's  
College, St John's Street,  
CB2 1TP



**GOTHIC REVIVAL AND  
DECORATIVE ARTS:  
PETERHOUSE AND  
QUEENS' COLLEGE**

Join Cambridge Green Badge Guide, Yvonne Pinchen, on a walking tour of Peterhouse, St Mary's Church, St Botolph's Church and Queens' College, focuses on the work of nationally acclaimed designers, artists and artisans who restored these buildings in the 19th century.

**2.15PM - 4.15PM**  
→ **FRI 13 SEPT**

Meet outside Little St Mary's  
Church, Trumpington Street,  
CB2 1RR



**EXHIBITION TOUR:  
EVOLUTION AS  
INSPIRATION**

Take a tour around our *Evolution as Inspiration* exhibition with curator, Jack Ashby. Showcasing artworks by Jonathan Kingdon, who seeks to explore how and why incredible structures, shapes and patterns, both in the inner workings of animal bodies and in their external appearances, have evolved.

**2.30PM - 3.30PM**  
→ **FRI 13 SEPT**  
**11AM - NOON**  
→ **SAT 14 SEPT**

Museum of Zoology, Downing  
Street, CB2 3EJ



## HISTORY OF MARSHALLS AND TOUR OF AIRCRAFT HANGARS

Discover more about the amazing history of Marshalls, a story that mirrors the history of motoring and aviation in the UK from 1909, and then join us on a behind the scenes tour of the hangars.

**4PM - 5.30PM**

→ **FRI 13 SEPT**

**10.30AM - NOON**

→ **SAT 14 SEPT**

Main entrance, Marshall Aerospace and Defence Group, The Airport, Newmarket Road, Cambridge, CB5 8RY



## QUAKER MEETING AT JESUS LANE FRIENDS MEETING HOUSE

Join us for short talks about Cambridge Quakers both past and present, experience a Quaker meeting based on quiet worship and find out more over refreshments.

**5.30PM - 7.30PM**

→ **FRI 13 SEPT**

Jesus Lane Quaker Meeting House, 12 Jesus Lane, CB5 8BA



## DINE AT CORPUS CHRISTI COLLEGE

Join us and dine in the historic splendour of the 19th-century dining hall at Corpus Christi College.

The evening will start with a sparkling pre-dinner drink followed by a delicious three-course meal ending with coffee and a short talk about the College's history by a special guest speaker.

**7PM - 10PM**

→ **FRI 13 SEPT**



A good selection of wine is available to buy for dinner (cash only).

Dress to impress.

Please notify us of any dietary requirements at the time of booking.

### MENU

Sparkling Pre-Dinner Drink

### STARTER

Confit Sea Trout, Vanilla Emulsion, Apple or  
Tomato Gazpacho, Celery Mousse, Basil Oil (V)

### MAIN

Slow Cooked Pork Belly, Smoked Pomme Puree, Caramelised Shallots, Glazed Carrot or  
Summer Vegetable Risotto, Buttered Radish, Soured Tomatoes (V)

### DESSERT

Treacle Tart, Chantilly Cream, Cherry Compote

## MARLOWE AND MODERN POETRY AT TWILIGHT

Pairing medieval and renaissance poetry with new compositions, this special evening opening of the Parker Library will feature a display of the library's rare editions of Christopher Marlowe's works with live readings by members of the Marlowe Society and new poems by Michael Brown.

**7PM - 8.30PM**

→ **FRI 13 SEPT**

The Parker Library, Corpus Christi College, Trumpington Street, CB2 1RH



## AN HOUR IN THE LIFE OF A SCIENTIST

Join the people who work at the Sainsbury Laboratory, discover your inner scientist, and take a hands-on tour of the modern facilities used to explore the inner workings of plants.

**10AM - 11.30AM**

**NOON - 1.30PM**

**2PM - 3.30PM**

**4PM - 5.30PM**

→ **SAT 14 SEPT**

Sainsbury Laboratory, 47 Bateman Street, CB2 1LR



**CAMBRIDGE BUDDHIST CENTRE OPEN DAY**

A day of free tastings, talks and tours. Try meditation and mindfulness, tour the listed 200 year old Festival Theatre and visit the shrine rooms and Georgian House.

**10AM - 4PM**  
→ **SAT 14 SEPT**

Cambridge Buddhist Centre,  
38 Newmarket Road,  
CB5 8DT



**THE MANUSCRIPTS AND RARE BOOKS OF THE PARKER LIBRARY: COLLECTING AND PRESERVING THE MEDIEVAL PAST**

The Parker Library and the Cambridge Colleges' Conservation Consortium have teamed up to provide a glimpse into the world of medieval book making. See how these books were first made and what is required to care for them to ensure they survive for centuries to come.

**10AM - 4PM**  
→ **SAT 14 SEPT**

The Parker Library,  
Corpus Christi College,  
Trumpington Street, CB2 1RH



**MILL ROAD HISTORY SOCIETY WALK: BEYOND REALITY CHECKPOINT**

Take an hour long walk down Mill Road from Donkey Common to the railway bridge looking at significant buildings and places. The tour ends at the Bath House on Gwydir Street for refreshments, a small exhibition and short talk.

**10.15AM - 12.30PM**  
→ **SAT 14 SEPT**

Meet at Mortimer Road exit from Donkey Common,  
Mortimer Road, CB1 1LY



**MILL ROAD HISTORY SOCIETY WALK: DISCOVER MILL ROAD CEMETERY**

This hour long tour introduces you to some of the more significant aspects of Mill Road Cemetery, its monuments, wildlife and stories. The tour ends at the Bath House on Gwydir Street for refreshments, a small exhibition and short talk.

**10.15AM - 12.30PM**  
→ **SAT 14 SEPT**

Meet on Mill Road, outside cemetery entrance, Mill Road,  
CB1 2AW



### MILL ROAD HISTORY SOCIETY WALK: DISCOVER ROMSEY

This hour long tour traces the 200 year development of Romsey from fields and farms to the terraced streets once known as Railway Town and Little Russia to today's cafes and stunning new mosque. The tour ends at the Bath House on Gwydir Street for refreshments, a small exhibition and short talk.

**10.15AM - 12.30PM**

→ **SAT 14 SEPT**

Meet outside 109 Burnside,  
CB1 3PA



### LAWRENCE ROOM MUSEUM

Visit Hermione, a unique Roman portrait mummy from Egypt, in Girton College's fascinating museum of antiquities. The collection holds artefacts from Egypt, China, the Mediterranean, and from an Anglo-Saxon cemetery, first excavated on the Girton College site in 1881.

**11AM - 1PM**

→ **SAT 14 SEPT**

Lawrence Room, Girton  
College, Huntingdon Road,  
CB3 0JG



### A HISTORY OF HOUSING IN CAMBRIDGE

Tony Kirby explores the domestic architecture of Cambridge from medieval times, through the housing boom of the Victorian and Edwardian period, to the new developments of today.

**11AM - NOON**

→ **SAT 14 SEPT**

Lord Ashcroft Building -  
LAB006, Anglia Ruskin  
University, East Road,  
CB1 1PT



### GOTHIC REVIVAL AND DECORATIVE ARTS: JESUS COLLEGE AND ALL SAINTS CHURCH

Join Green Badge Guide, Yvonne Pinchen, on a walking tour of Jesus College and All Saints Church, to see the work of acclaimed designers, artists and artisans who restored and decorated these buildings in the 19th century.

**11AM - 12.30PM**

→ **SAT 14 SEPT**

Meet outside All Saints  
Church, 46 Jesus Lane,  
CB5 8BW



**DISCOVER MADINGLEY HALL**

Especially for Open Cambridge, Madingley Hall opens its doors for tours guided by local experts. Discover more about its rich history and explore the beauty of the 16th-century country house.

**11AM - 3PM**  
→ **SAT 14 SEPT**

Madingley Hall, Institute of Continuing Education, Madingley, CB23 8AQ



**MADINGLEY HALL: DISCOVER THE MEDICINAL GARDEN**

Join us to explore Madingley Hall's beautiful eight acre gardens. Discover cures, curiosities, tastes and essences and learn fascinating facts about herbs and medicinal plants with professional herbalists and the garden team at the Hall's Medicinal Garden.

**11AM - 3PM**  
→ **SAT 14 SEPT**

Madingley Hall, Institute of Continuing Education, Madingley, CB23 8AQ



**ALL SAINTS' OPEN DAY: DISCOVER AN ARTS AND CRAFTS GEM**

Join us in exploring a wonderfully surviving example of Victorian art and architecture. Immerse yourself in this elaborately decorated church and find out more about the men and women who designed and shaped All Saints'.

**11AM - 4PM**  
→ **SAT 14 SEPT**

All Saints' Church, Jesus Lane, CB5 8BP



**IT'S ALL FUN AND GAMES**

A special Saturday opening highlighting centuries of toys and fun for children. Co-hosted with the Whipple Library, play with our museum handling objects and enjoy quirky Victorian children's books from our special collections.

**12.30PM - 4.30PM**  
→ **SAT 14 SEPT**

Whipple Museum of the History of Science, School Lane, CB2 3RH



**THE WOMEN WHO MADE MODERN CAMBRIDGE**

One of the forgotten pieces of Cambridge history is the work that a group of women undertook from the 1880s to the end of World War II to overhaul and modernise our city. Local historian, Antony Carpen, tells the story of these women, without whom our city would not be what it is today.

**1PM - 2PM**  
→ **SAT 14 SEPT**

LAB006, Lord Ashcroft Building, Anglia Ruskin University, East Road, CB1 1PT





## ARCHETYPES

An exhibition and talk by Jonathan Tame, exploring the five universal themes – revelation, belief, sacrifice, transcendence and destiny – found in almost every culture and society.

**2.30PM - 3PM**

→ **SAT 14 SEPT**

Great St Mary's Church,  
Senate House Hill, CB2 3PQ



## BEHIND THE SCENES AT THE ADC THEATRE

Plays have been presented on the ADC Theatre site since 1855 making it England's Oldest University Playhouse. Explore the backstage area, find out more about the theatre's history and see where Olivia Colman and Eddie Redmayne launched their careers.

**2.30PM - 3PM**

**4PM - 4.30PM**

→ **SAT 14 SEPT**

ADC Theatre, Park Street,  
CB5 8AS



## OPEN OBSERVATORY

Visit the historic Observatory, view the Northumberland Telescope and find about the fascinating technology of the Thorowgood Telescope. The neo-classical Observatory building will also be open to visit, including its library - one of the very few specialist astronomical libraries in the country.

**4PM - 6PM**

→ **FRI 13 SEPT**

The Observatory, Institute of  
Astronomy, Madingley Road,  
CB3 0HA



## HIDDEN TREASURES AT CAMBRIDGE CENTRAL LIBRARY

Join us at the Central Library for a brief tour and an in depth look at the treasures of the Cambridgeshire Collection.

**3PM - 4PM**

→ **SAT 14 SEPT**

7 Lion Yard, Cambridge  
Central Library, Grand Arcade,  
CB2 3QD



# Open Eddington

**Eddington is a new and growing community delivered by the University of Cambridge. Cambridge's newest district has an award winning community centre, primary school, nursery, supermarket and sporting facilities with more to come.**

**The first phase of Eddington is focussed on creating the foundations for a long-lasting and sustainable community. There are homes, facilities and green open spaces to support new residents, neighbours and the wider Cambridge community. Join us for a day of talks and tours, entertainment and fun. Find out Eddington's ambitions for environment, conservation and community in this new neighbourhood.**

**For more information visit  
[www.eddington-cambridge.co.uk](http://www.eddington-cambridge.co.uk)**



## CAMBRIDGE'S FIRST ENERGY CENTRE AND DISTRICT HEATING NETWORK

Homes in Eddington do not have individual boilers but instead have a link to the Energy Centre via a district heating network which provides heating and hot water across the entire site. Join this exclusive behind the scenes tour to discover more about the engineering involved.

**10AM - 11AM**

**11AM - NOON**

**1PM - 2PM**

**2PM - 3PM**

→ **SAT 14 SEPT**

Energy Centre, Burkitt Lane,  
Eddington, CB3 1TZ



## GUIDED TOURS OF EDDINGTON

Join Visit Cambridge and Beyond for guided tours of Eddington focussing on the development's architecture and sustainability features. Discover the contemporary architecture and innovative infrastructure helping residents lead more sustainable lives.

**10AM - 11AM**

**11AM - NOON**

**1PM - 2PM**

**2PM - 3PM**

→ **SAT 14 SEPT**

Market Square, Eddington,  
CB3 1SE



**ART AT EDDINGTON:  
WALKING TOUR AND  
TALK**

A walking tour of Eddington visiting major art installations – Richard of York Gave Battle in Vain, the Pixel Wall, Fata Morgana Teahouse and We Are All Under The Same Sky. Plus hear how resident artist schemes and engagement have been a key part of the community's development.

**10.30AM - 11.30AM**

**12PM - 1PM**

**2PM - 3PM**

→ **SAT 14 SEPT**

Storey's Field Centre,  
Eddington Avenue, CB3 1AA



**ARTSCAPERS  
EXHIBITION**

Since 2016 the ArtScapers programme has been connecting with young children, families, educators and neighbours living in and around Eddington. They've explored ideas as diverse as friendship, future and what makes a community. Visit this exhibition which celebrates their work and ideas.

**10AM - 4PM**

→ **SAT 14 SEPT**

University of Cambridge  
Primary School,  
Eddington Avenue, CB3 0QZ



**EDDINGTON LIVE**

**JOIN US IN EDDINGTON ON  
SATURDAY 14 SEPTEMBER FOR  
A DAY OF LIVE MUSIC, FOOD  
AND ENTERTAINMENT.**

Music includes the unmissable Brass Funkeys – an 8-piece Brass Band drawing on the traditions of New Orleans. Originally from Cambridge, they have played everywhere from Glastonbury and Wilderness festivals to the O2 and Ronnie Scott's in London. The Brass Funkeys will deliver

an open air live show bursting at the seams with ideas and infectious energy.

The event will include a samba band and other artists throughout the day as well as a street food market featuring some of the region's favourite food trucks and vendors.

## BECOME AN ARTSCAPER

Join artists from the ArtScapers programme, Caroline Wendling and Philippa Pereira-Stubbs to explore ideas of the Eddington community and how it is growing, and help create an artistic record of Open Eddington 2019.

**10AM - 4PM**

→ **SAT 14 SEPT**

University of Cambridge  
Primary School,  
Eddington Avenue, CB3 0QZ



## COMMUNITY, CLASSES AND CHILDREN'S EVENTS AT THE STOREY'S FIELD CENTRE

Drop in to the award-winning centre to meet some of the groups who run classes and events there.

**10AM - 4PM**

→ **SAT 14 SEPT**

Storey's Field Centre,  
Eddington Avenue, CB3 1AA



## JUNKYARD ORCHESTRA

Join a band workshop on the junk orchestra, compose your own music and make an instrument from recycled materials to take away.

**10AM - 4PM**

→ **SAT 14 SEPT**

Market Square, Eddington,  
CB3 1SE



## PEDAL POWER AT EDDINGTON

Jump on the bike jukebox to power the music, take the sprint challenge or have a go at pedal-powered Scalextric.

**10AM - 4PM**

→ **SAT 14 SEPT**

Market Square, Eddington,  
CB3 1SE



## SELF-GUIDED TOUR OF EDDINGTON

Explore Eddington with this free self-guided tour and information sheet which includes descriptions of the architectural and design features and showcases the quality of the development and the sustainability principles behind it. Also included is a family treasure hunt around the site.

**10AM - 4PM**

→ **SAT 14 SEPT**

Market Square, Eddington,  
CB3 1SE



## SHOWTIME AT THE STOREY'S FIELD CENTRE

How do you put on a show at one of Cambridge's best new venues? Learn about the behind the scenes elements that help to put on a concert or performance and try your hand at the lighting rig.

**11.30AM - 12.30PM**

**1.30PM - 2.30PM**

→ **SAT 14 SEPT**

Storey's Field Centre,  
Eddington Avenue, CB3 1AA



## THE UNDERGROUND WASTE SYSTEM AT EDDINGTON

Discover more about the unique approach to waste and recycling the University, with Cambridge City and South Cambridgeshire District Councils, have adopted. This communal underground waste and recycling system eliminates the need for residents to put out individual bins.

**10AM - 4PM**

→ **SAT 14 SEPT**

Market Square, Eddington,  
CB3 1SE





**UNDERGROUND  
SECRETS OF THE  
STOREY'S FIELD CENTRE**

The award-winning Storey's Field Centre is the community centre and performing arts space at Eddington. Look behind the scenes in the unique underground labyrinth system that ventilates and cools the Centre.

**10.30AM - 11AM**  
**12.30PM - 1PM**  
**2.30PM - 3PM**  
→ **SAT 14 SEPT**

Storey's Field Centre,  
Eddington Avenue, CB3 1AA



**ECOLOGY AT  
EDDINGTON**

Join this fascinating ecology walk with Mike Dean, project ecologist, as he highlights some of the features and infrastructure in place that will enhance the biodiversity of the site.

**12.30PM - 1.30PM**  
**1.45PM - 2.45PM**  
**3PM - 4PM**  
→ **SAT 14 SEPT**

Market Square, Eddington,  
CB3 1SE



**HOW TO FIND US**

Cycle, pedestrian and vehicle access to Eddington is from Madingley Road (opposite High Cross) and Huntingdon Road (opposite the Hotel Felix). You can also walk and cycle on the Ridgeway from Bunker's Hill and Storey's Way.

**SUSTAINABLE MODES  
OF TRANSPORT**

Cycle or walk: Eddington is just two miles from central Cambridge - a convenient walk or cycle ride.

Buses: The Universal Bus route links Cambridge Railway Station and City Centre to Eddington. For more information about the service and its stops visit: **[go-whippet.co.uk](http://go-whippet.co.uk)**

We encourage visitors to travel sustainably. If you do need to drive, parking is conveniently located at the Madingley Road Park & Ride with Eddington a short walk away.

Limited Blue Badge parking is available on site.

For more information visit: **[eddington-cambridge.co.uk/explore/how-to-find-us](http://eddington-cambridge.co.uk/explore/how-to-find-us)**

#Change

CAMBRIDGE  
FESTIVAL  
OF IDEAS

14 Oct –  
27 Oct 2019

CAMBRIDGE  
SCIENCE  
FESTIVAL

09 Mar –  
22 Mar 2020

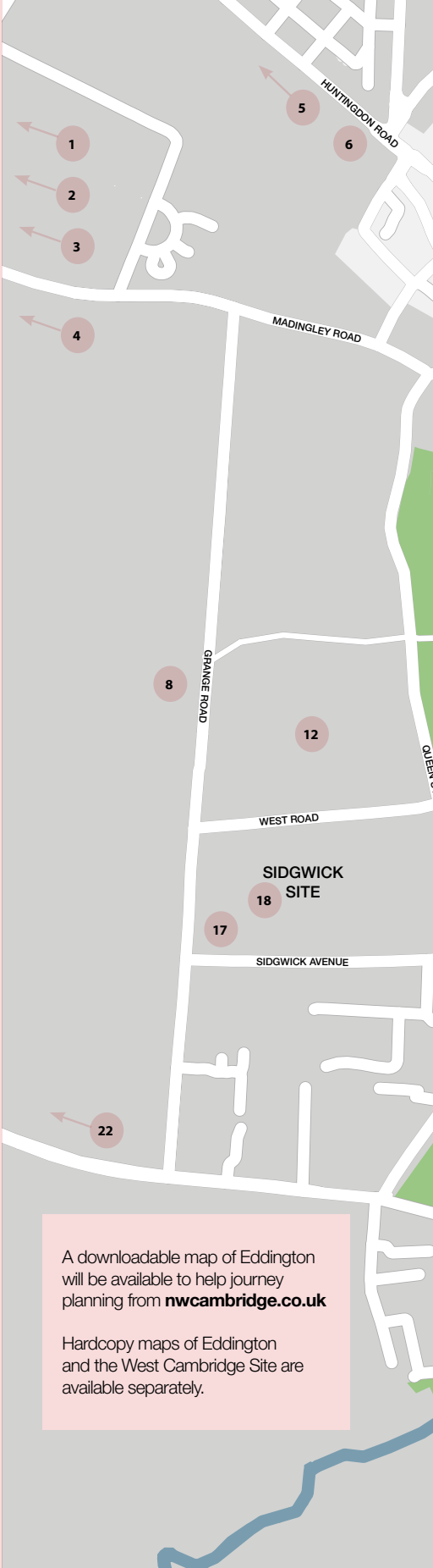
The Open Cambridge weekend takes place across dozens of locations, each with their own architectural style and level of accessibility. Everyone is welcome to the event and this includes children in pushchairs, wheelchair users and people with additional access needs. Please see the summary of accessibility at our venues below. For more detailed information or to make additional arrangements for access requirements please call: 01223 766766 or email: [opencambridge@admin.cam.ac.uk](mailto:opencambridge@admin.cam.ac.uk)

The Cambridge University Disability Access Guide, including maps, is available at: [www.cam.ac.uk/disability](http://www.cam.ac.uk/disability)

- T: Toilet, wheelchair accessible
- S: Step free
- Li: Lift to all floors
- PA: Partial access: phone or email to discuss your requirements
- I: Induction loop

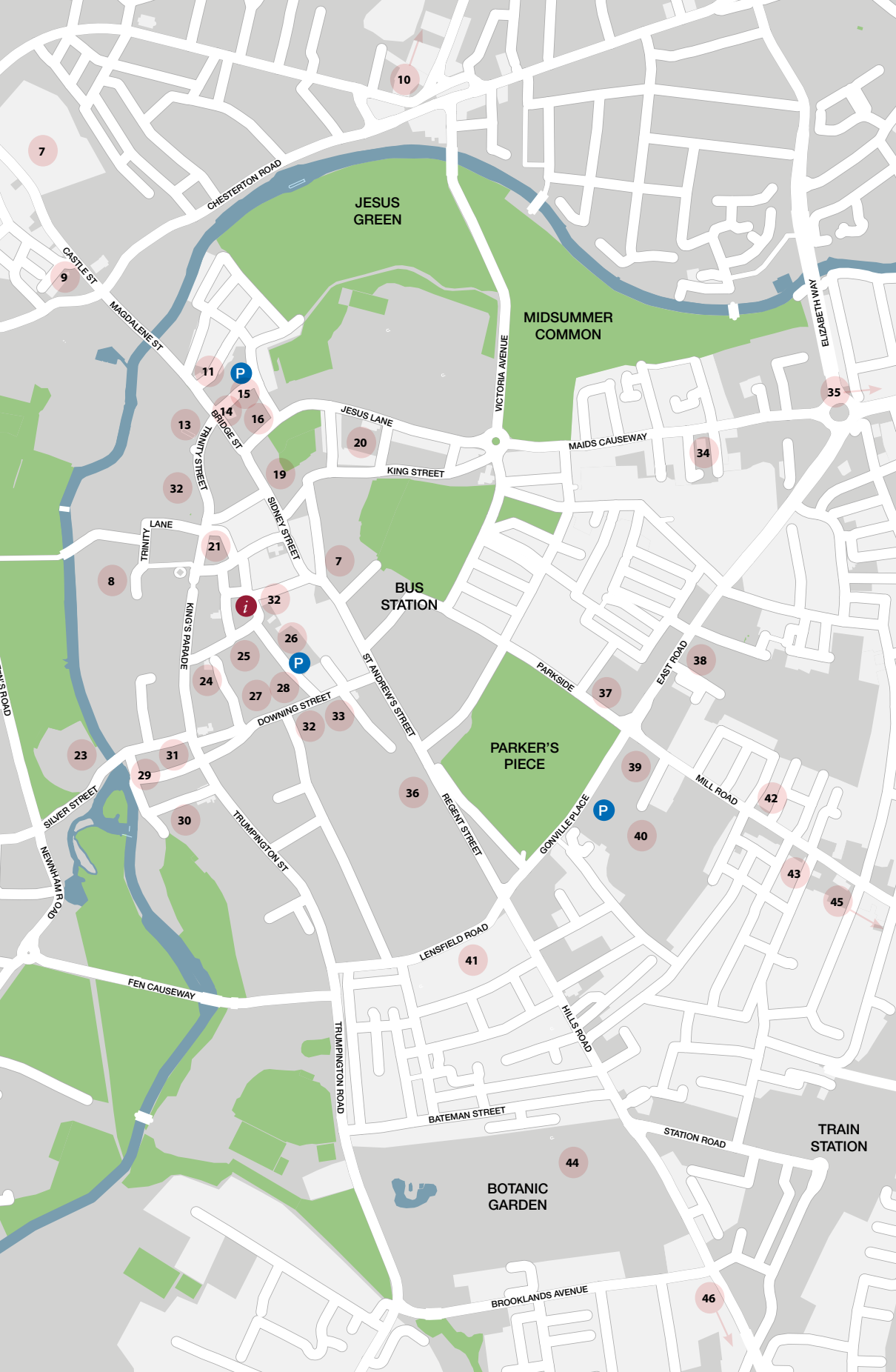
01	Cambridge American Cemetery and Memorial	T S
02	Madingley Hall	T S I
03	Institute of Astronomy	T PA
04	Sedgwick Museum Conservation Unit	Li, PA
05	Girton College	T S
06	Murray Edwards College	T S Li I
07	Cambridgeshire County Council	T S Li I
08	Robinson College	T S I
09	Museum of Cambridge	PA
10	Arney Waste Management Park	PA
11	St Clement's Church	PA
12	Cambridge University Library	T S Li I
13	St John's College	T S Li I
14	The Round Church	S PA
15	ADC Theatre	PA
16	Jesus Lane Quaker Meeting House	T S Li I
17	Selwyn College	PA
18	Marshall Library of Economics	T S Li
19	Sidney Sussex College	PA
20	All Saints' Church	PA
21	Great St Mary's Church	PA
22	Wolfson College	T S
23	Queens' College	PA
24	Corpus Christi College	PA
25	David Attenborough Building	T S Li I
26	Cambridge Central Library	T S Li I
27	Whipple Museum of the History of Science	Li, PA
28	Museum of Zoology	T S Li I
29	Scudamore's Punting Company	PA
30	University Centre	T S Li
31	Little St Mary's Church	PA
32	Museum of Archaeology and Anthropology	T S Li I
33	Haddon Library	T S Li I
34	Cambridge Buddhist Centre	T PA
35	Marshall Aerospace and Defence Group	T PA
36	The Heong Gallery	S PA
37	Cambridge Fire Station	S
38	Anglia Ruskin University	T S Li
39	Mortimer Road exit from Donkey Common	PA
40	Fenner's Cricket Ground	PA
41	Scott Polar Research Institute	T S I
42	Mill Road Cemetery	PA
43	Abu Bakr Mosque Cambridge	S
44	Sainsbury Laboratory	T S Li I
45	Burnside	PA
46	Royal Papworth Hospital NHS Foundation Trust	PA

**Image credits:**  
Cover: Mill Road Bridge © Phil Hearing; Page 6: A detail from the purported portrait of Christopher Marlowe © The Master and Fellows of Corpus Christi College, Cambridge; Page 8: Coe Fen, Cambridge © Matt Bilton; Page 11 Cambridge Market Square © The Cambridgeshire Collection; Page 12/13: Yoko Ono, Wish Tree (1996/1997), En Trance, Lonja del Pescado, Alicante, Spain, 1997 © Miguel Angel Valero. Courtesy of Yoko Ono; Page 16: Mill Road Cemetery © Kip Loades; Page 17: Madingley Hall © Alex Bibby; Page 18: Mayor Florence Ada Keynes © The Cambridgeshire Collection



A downloadable map of Eddington will be available to help journey planning from [nwc.cambridge.co.uk](http://nwc.cambridge.co.uk)

Hardcopy maps of Eddington and the West Cambridge Site are available separately.



**For enquiries or to pre-book:**  
[www.opencambridge.cam.ac.uk](http://www.opencambridge.cam.ac.uk)  
or call: 01223 766766

**Bookings open:**  
Mon 19 Aug 2019

**Lines open:**  
11AM – 3PM  
Mon – Fri



UNIVERSITY OF  
CAMBRIDGE

OPEN  
CAMBRIDGE